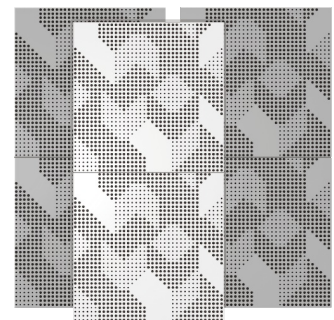
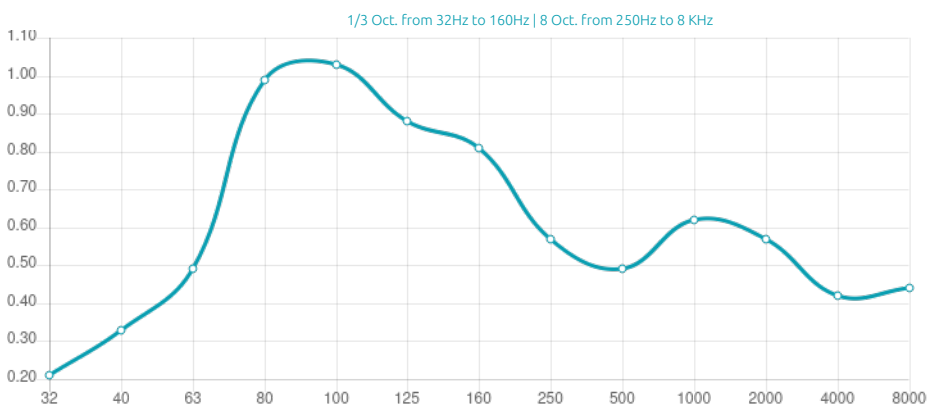


Performance



Features

Type:

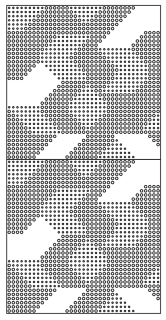
Pistonc Diaphragmatic Absorber
 Absorption Range: 80 Hz to 120 Hz
 Peak Absorption Frequency: 90 Hz

Material:

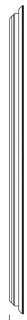
- Natural Wood veneer
- Marine-grade plywood structural frame
- Calibrated cell acoustic foam

Technical Information

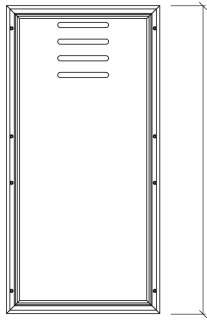
This panels can only be installed on vertical wall corners. Not for ceiling use.



595



56



1190



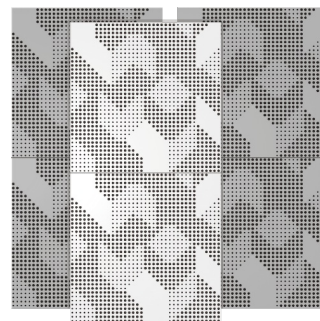
Dimensions:

FG - LW | 595x1190x56mm | 8.24 Kg

FG - NW | 595x1190x56mm | 8.8 Kg

With a peak absorption from 80 Hz to 120 Hz, the Wall Bass Trap offers an enriched acoustic experience, directly attenuating standing waves. The various front designs available for the Wall Bass Trap allow you to create artistic patterns when mounted on the walls of your home studio or recording room, completely indistinguishable from the Artnovion absorber range.

The Wall Bass Trap - 595 x 1190 - equivalent to 2 standard panels, is equipped with a weighted pistonic membrane enclosing a volume with a high performance acoustic core. This design allows for a precisely tuned, high performance absorption. Bringing you the maximum performance in as least space as possible.



Product finishes

(FG - LW) Lacquered Wood Finishes



FG | (L01) Blanc



FG | (L02) Noir



FG | (L03) Rouge



FG | (L05) Silver



FG | (L06) Noir
Vintage



FG | (L07) Graphite
Black



FG | (L08) Rose Gold



FG | (L09) Classic
Gold



FG | (L10) Bronze

(FG - NW) Natural Wood Finishes



FG | (W01) Cerise



FG | (W02) Marron



FG | (W03) Wenge

Purpose

- Room mode control
- Bass ratio control
- Low frequency RT reduction
- Improving low frequency response
- Reducing low frequency time decay

Recommended for

- Vertical Wall
- Small Room Acoustics
- Acoustic pressure zones

Fixing Systems

Add-ons



+ FixArt Connect

Wall



+ FixArt - Tube